

County Councillors Report September 2025.

Planning 25/00676/OUT (135 homes, land off Ratby Lane, Field Head

Call to action, Field Head Needs You!

Please write or email your objections regarding the above planning application.

Please email your comments on planning **25/00676/OUT** (Land South off Jacqueline Road Field Head Leicestershire)

Outline planning application for the erection of up to 135 dwellings, amenity space, areas for outdoor play, landscaping and all associated infrastructure (all matters except access reserved)

Email. planning@hinckley-bosworth.gov.uk. Include your full name, address, and clearly state whether you **object** or **support**.

You can also email laura.ashton@hinckley-bosworth.gov.uk Laura Ashton is the case officer or write to Laura Aston Planning Department, Hinckley and Bosworth Borough Council, Rugby Road, Hinckley. Leicestershire. LE10 0FR.

Email template

Subject: Objection – Planning Application **25/00676/OUT** (Land South off Jacqueline Road, Field Head Leicestershire)

Dear Planning Team,

I wish to **object** to planning application **25/00676/OUT**.

My reasons include:

- Highway safety and extra traffic on Ratby Lane/Launde Road/A50

- Development in the open Countryside.

The site lies outside the settlement boundary for Markfield and Field Head. where policies NE5 and

RES5 in the Hinckley and Bosworth Local Plan (2001) limit development in the countryside to certain

essential uses provided that these meet certain criteria. The proposal does not constitute one of these exceptions.

Specifically policy DM4 which identifies sustainable uses within the countryside of which this development is not one.

The proposal would lead to a significant harm to the landscape that cannot be outweighed by any potential benefits that maybe provided by the development. this would therefore lead to an

unsustainable form of development in the countryside contrary to Policy NE5 and RES5 of the

adopted Local Plan and Paragraph 17 and 109 of the National Planning Policy Framework.

Furthermore the proposal would also cause detriment to the character of the designated

National and Charnwood Forests contrary to Policies 21 and 22 of the Hinckley and Bosworth Core Strategy 2009.

- poor visibility splay
- Pressure on local services (GPs, schools)
- Loss of countryside and urbanisation of Field Head
- Harm to habitats and conflict with the Local Nature Recovery Strategy
- Overlooking, privacy and boundary treatment impacts for neighbour

Fires in Martinshaw Woods a Resident Writes his Serious Concerns.

Firstly, setting fires, is Arson, an extremely serious criminal offence.

Could parents please emphasise the seriousness of arson being part of a criminal record.

To members of the public. If they witness it happening, please ring the police and they will attend.

Lighting fires in the woodland especially in recent dry periods can cause fires to quickly spread. Incidents tie up, emergency services added to that the cost, of fire appliances attending.

In general, why should a few anti-social individuals spoil our beautiful woodland. As well as the actual fires invariably, litter is strewn around the site. The litter itself being dangerous to both humans and animals alike, with often broken bottles and glass laying around it's a danger to dogs running around.

News update from Trading Standards.

From the 1st of June 2025, the sale and supply of single use vapes were banned across the UK.

If you see any single use vapes on sale in shops, or you believe a business is selling unregulated products, you can report this to Trading Standards by calling Citizen's Advice Consumer Service on 0808 2231133

Any remaining used disposable vapes consumers may still have can be disposed of in dedicated bins at local shops where vapes are sold, and at your local recycling and household waste site in the small waste electrical and electronic equipment (WEEE) recycling bin.

Vapes are a cause of many fires within the waste industry and contain many valuable materials. By recycling them we are reducing the fire risk and rescuing valuable reusable resources.



Pet Scam Alert!

We are aware of an email scam that is currently circulating which states that your pet's microchip has expired, and you need to pay for a new one.

This email may appear genuine as it may contain your name, address or even your pet's name. If you receive an email like this, be cautious – pet microchips do not expire.



You can forward suspicious emails to report@phising.gov.uk

If you think you may have lost money because of a scam, contact your bank and report it to Action Fraud via www.actionfraud.police.uk

Been a victim of holiday fraud?

Make sure you report it to www.actionfraud.police.uk on 0300 1232040

Holiday fraud comes with many different tactics employed by criminals to dupe unsuspecting members of the public. The most frequent frauds are clone comparison websites, airline websites and holiday websites.

At a quick glance it would appear you are on a trusted site, whereas in reality the website address has been changed. You may assume it's a genuine site and willingly hand over money only to find a booking or flight does not exist.

- Using a company you haven't used before? Research the company you're booking through, read the reviews and be cautious of 'too good to be true' offers. Also, don't click on a link and check online for the official website.
- If it is a package holiday, make sure your tour operator is a member of a trade association such as ABTA or ATOL - you can verify their membership details on the official websites.
- Pay with a credit card for extra protection and avoid paying by bank transfer.

You can find out more from Action Fraud at www.takefive-stopfraud.org.uk

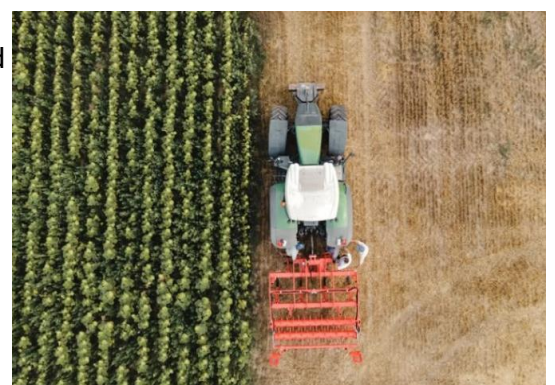
Regularly selling at Car Boot sales or weekend markets?

Most people who sell at boot sales probably don't consider themselves to be in trade, even if they sell at boot sales several times a year. If you buy goods or make them to resell, you are likely to be a trader even if boot sales are not a major source of income. With car boot season under way make sure you are complying with the law. A full guide outlines the legal requirements at www.businesscompanion.info



To our farming community – you are not alone.

Farming is more than a job – it's a way of life. But it can also be tough, with long hours, unpredictable weather and financial pressures. The stress can take its toll on anyone. If you're feeling overwhelmed and stressed, please know you are not alone and it's okay to ask for help. There are many resources available for farmers and those in rural communities. Whether you need someone to talk to, help with home repairs or an extra hand to ensure your livestock's welfare, there is support at The Farming Community Network and RABI



Counterfeit Beauty Products stopped at East Midlands Airport

During routine checks at EMA, our Imports Team recently stopped a consignment of counterfeit SkinCeuticals cosmetics. Officers were alerted by poor quality packaging and labelling that stated “made in USA” when the items had originated in the far east. The brand holder confirmed these products were counterfeit and they have been surrendered by the importer for destruction.

To avoid buying counterfeit beauty products online:

- Buy directly from the brand’s website or an authorised seller
- Read customer reviews
- Be wary of cut-price deals
- Inspect packaging once you receive the item
- Make sure you spot test a small amount on your skin to check for allergic reactions or irritation.

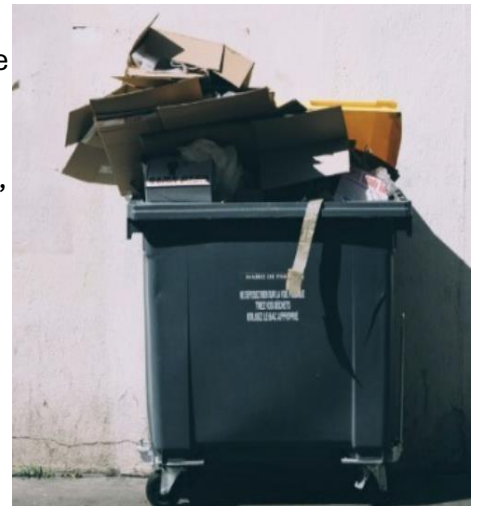


Having work done on your property? What about the waste?

Many traders are careful about how they store and dispose of building waste, but illegal waste operators may take advantage of consumers and business owners, resulting in fly tipping in our beautiful Leicestershire countryside. Check carefully before you employ a waste collector or construction company, and ask the following questions:

- Where will my waste go?
- Do you have the correct licence?
- What vehicles will you use?
- Do you take card payments?
- Can I have a VAT receipt?

Be wary if they cannot answer these questions or offer you a cash deal that sounds too low. As a householder, you have a legal duty to take all reasonable measures to ensure that your waste is disposed of properly.



Find out more about the disposal of trade waste in the county at www.leicestershire.gov.uk

Sunbathing season is upon us, are you sure that your sunscreen is up to the job?

Before using what’s left from last year, check the expiry date to be sure it’s still effective. If the date has passed, it should be replaced. We often intercept cosmetics, including sunscreen, at ports of entry and find that it’s counterfeit or its protection level (Sun Protection Factor) is incorrect. Buy from reputable sources to be sure that it will protect you. Don’t forget to protect your eyes too by wearing sunglasses that bear the CE or UKCA mark. Follow more detailed sun safety guidance on the NHS website



Something feeling not quite right?

Did you know you can report suspicious text messages for free? Just forward them to 7726. Your network provider can investigate the origin of the text and take action if it's found to be malicious.

www.actionfraud.police.uk

Follow us...

Have you visited our Facebook page recently? We regularly post on all manner of consumer issues from new scam alerts and product safety notices to the work of our Animal Health Officers and East Midlands Airport team. Join over 2000 followers to stay up to date at LeicsTradingStandards

Leicestershire Trading Standards Service Tel: 0116 305 8000

Email: tradingstandards@leics.gov.uk /LeicsTradingStandards.

I hope you found the County Councils new update interesting and helpful. I would like to take this opportunity to thank residents and councillors for your continued support. I am available at Parish Council meetings, or I can visit you if you need help or advice. Remember I am only an Email or a phone call away.

Ozzy O'shea.

Always Working for you Locally.

Cllr Ozzy O'Shea

Tel 0116 2394336 Mobile 07808585825

Email Ozzy.O'shea@leics.gov.uk

